

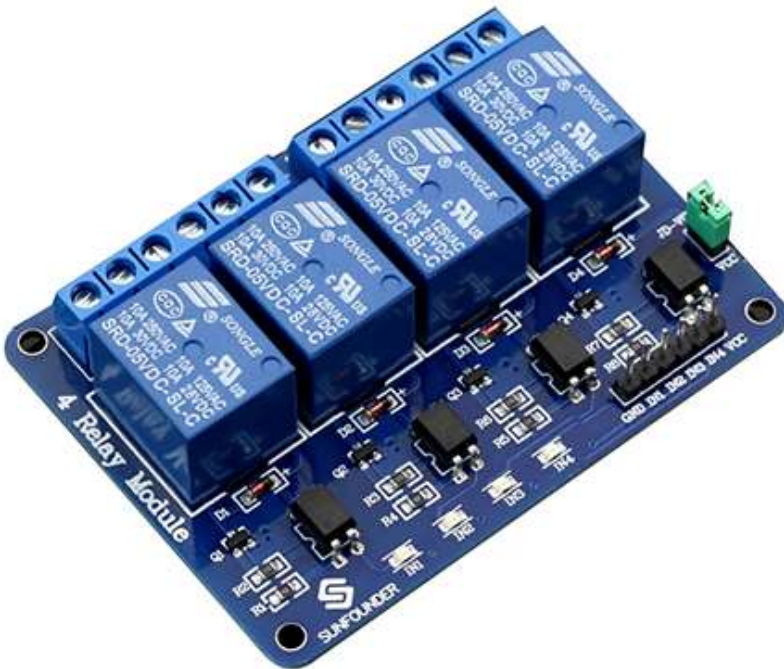
4 Channel 5V Relay Module

From Wiki

Contents

- 1 Introduction
- 2 Principle
- 3 Pin Description
 - 3.1 Input:
 - 3.2 Output:
- 4 Features:
- 5 Testing Experiment
 - 5.1 Experiment Principle
 - 5.2 Experiment Steps
 - 5.3 Code
 - 5.4 Summary
- 6 Resource

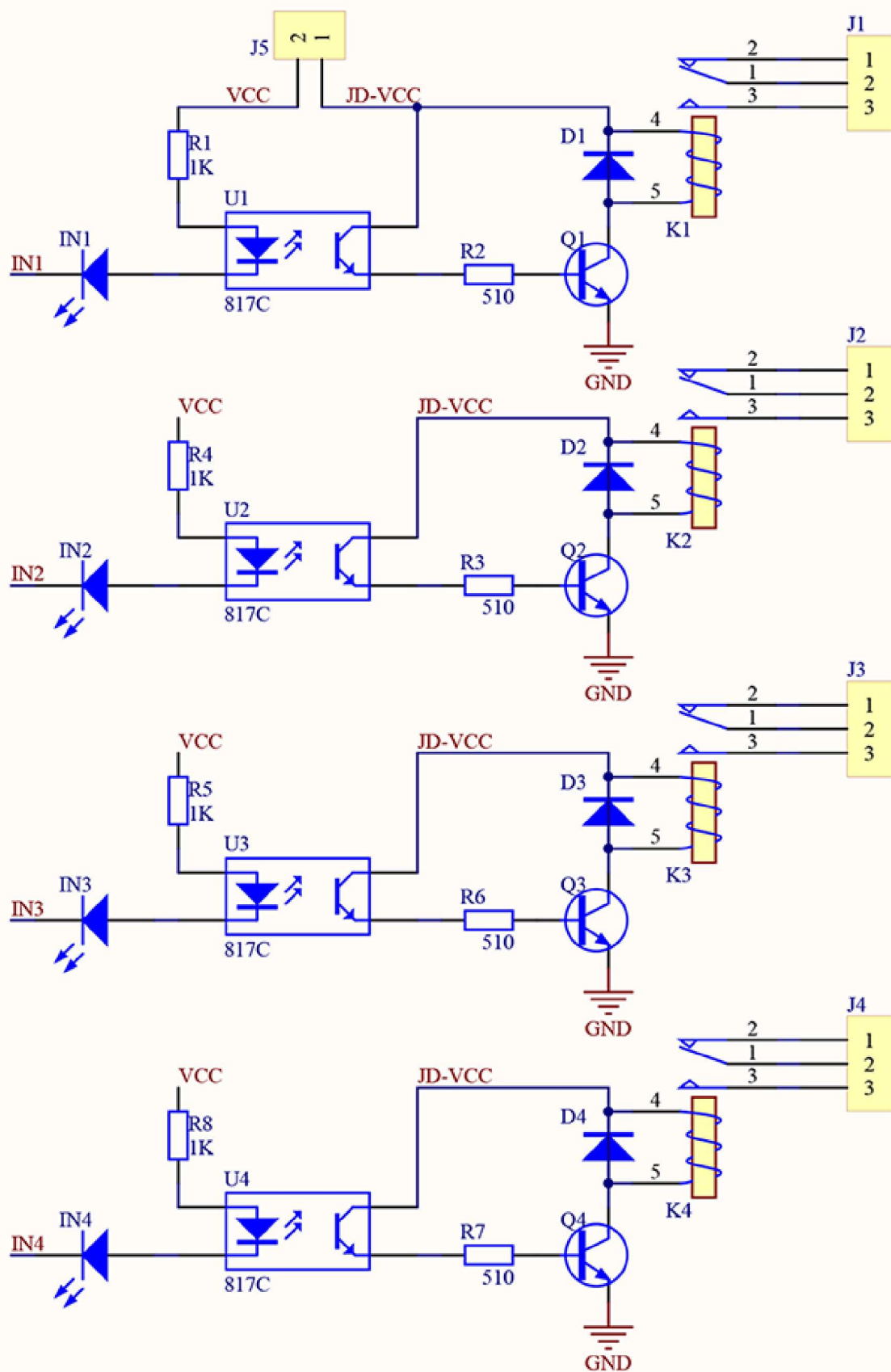
Introduction

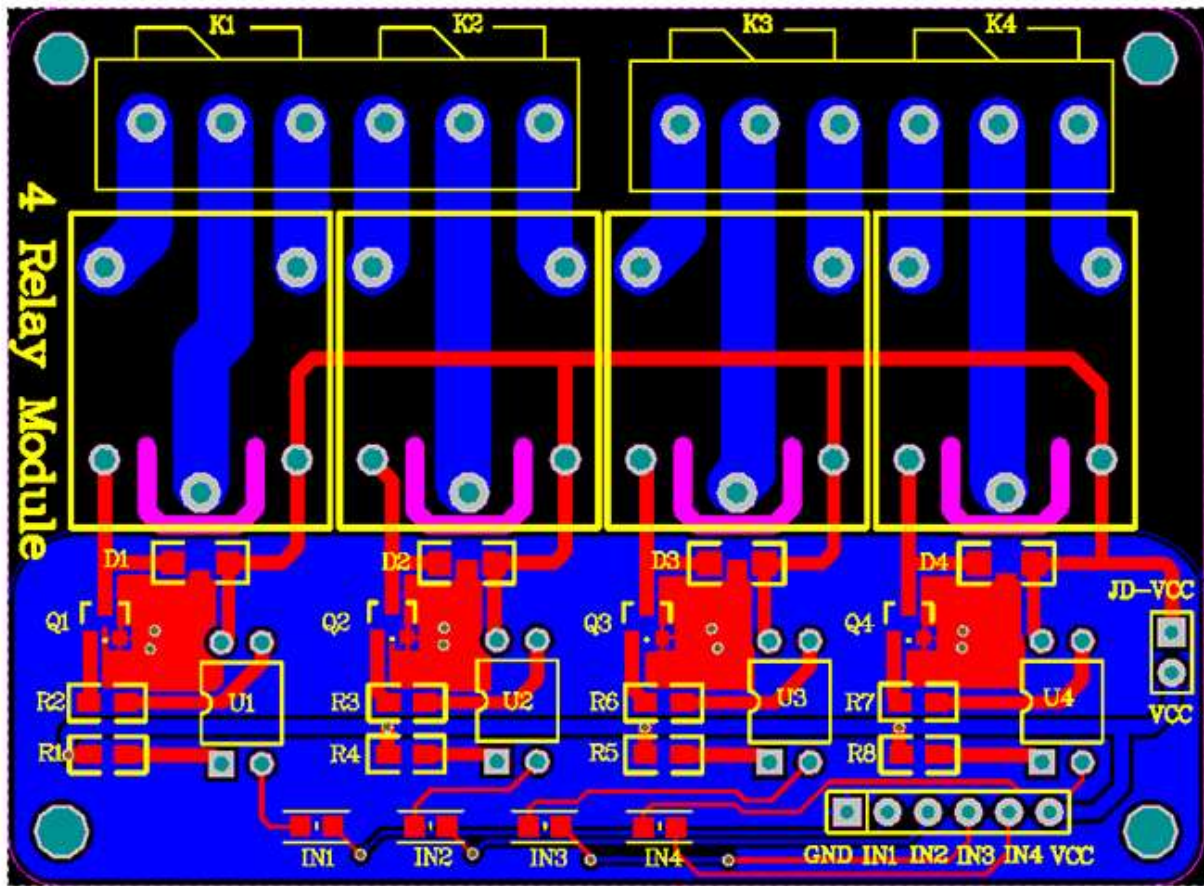


This is a 5V 4-channel relay interface board, and each channel needs a 15-20mA driver current. It can be used to control various appliances and equipment with large current. It is equipped with high-current relays that work under AC250V 10A or DC30V 10A. It has a standard interface that can be controlled directly by microcontroller.

Principle

From the picture below, you can see that when the signal port is at low level, the signal light will light up and the optocoupler 817c (it transforms electrical signals by light and can isolate input and output electrical signals) will conduct, and then the transistor will conduct, the relay coil will be electrified, and the normally open contact of the relay will be closed. When the signal port is at high level, the normally closed contact of the relay will be closed. So you can connect and disconnect the load by controlling the level of the control signal port.





Pin Description

Input:

VCC: Positive supply voltage

GND: Ground

IN1--IN4: Relay control port

Output:

Connect a load, DC 30V/10A, AC 250V/10A

Features:

- Size: 75mm (Length) * 55mm (Width) * 19.3mm (Height)
- Weight: 61g
- PCB Color: Blue
- There are four fixed screw holes at each corner of the board, easy for install and fix. The diameter of the hole is 3.1mm
- High quality SONGLE relay is used with single pole double throw, a common terminal, a normally open terminal, and a normally closed terminal
- Optical coupling isolation, good anti-interference.
- Closed at low level with indicator on, released at high level with indicator off
- VCC is system power source, and JD_VCC is relay power source. Ship 5V relay by default. Plug jumper cap to use
- The maximum output of the relay: DC 30V/10A, AC 250V/10A

Testing Experiment

Experiment Principle

When the input terminals (IN1, IN2, IN3, IN4) are supplied with low level signals, you can see relay K1, K2, K3, K4 closed successively and repeat this cycle. In order to show its the ability of driving load more intuitively, two LEDs are connected to relay K1 and K2.

Experiment Steps

Build the circuit

4 Channel relay shield	SunFounder uno R3
GND	GND
IN1	3
IN2	4
IN3	5
IN4	6
VCC	5V

Then upload the code. You should see the relays close one by one and the LED on the board and the LEDs connected to K1 and K2 light up or go out with the relays opened or closed.



Code

```

//the relays connect to
int IN1 = 3;
int IN2 = 4;
int IN3 = 5;
int IN4 = 6;
#define ON 0
#define OFF 1
void setup()
{
  relay_init();//initialize the relay
}

void loop() {

  relay_SetStatus(ON, OFF, OFF,OFF);//turn on RELAY_1
  delay(2000);//delay 2s
  relay_SetStatus(OFF, ON, OFF,OFF);//turn on RELAY_2
  delay(2000);//delay 2s
  relay_SetStatus(OFF, OFF, ON,OFF);//turn on RELAY_3
  delay(2000);//delay 2s
  relay_SetStatus(OFF, OFF, OFF,ON);//turn on RELAY_3
  delay(2000);//delay 2s
}

void relay_init(void)//initialize the relay
{
  //set all the relays OUTPUT
  pinMode(IN1, OUTPUT);
  pinMode(IN2, OUTPUT);
  pinMode(IN3, OUTPUT);
  pinMode(IN4, OUTPUT);
  relay_SetStatus(OFF,OFF,OFF,OFF);//turn off all the relay
}

//set the status of relays
void relay_SetStatus( unsigned char status_1, unsigned char status_2, unsigned char status_3,unsigned char status_4)
{
  digitalWrite(IN1, status_1);
  digitalWrite(IN2, status_2);
  digitalWrite(IN3, status_3);
  digitalWrite(IN4, status_4);
}


```

Summary

You can use this 4-channel relay to drive some household appliances, such as table lamp, fan, etc.

Resource

Relay_datasheet (http://wiki.sunfounder.cc/images/1/1f/Relay_datasheet.pdf) 

4_channel_relay_Schematic.pdf (http://wiki.sunfounder.cc/images/1/1c/4_channel_relay_Schematic.pdf) 

Retrieved from "http://wiki.sunfounder.cc/index.php?title=4_Channel_5V_Relay_Module&oldid=2990"

- This page was last modified on 20 March 2017, at 06:38.